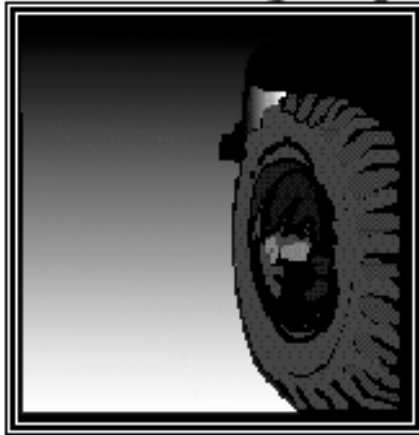


BTW Lesson 7

Emergency Procedures



Introduction to Lesson 7

During this lesson, your student will be exposed to several emergency situations that could happen while driving a vehicle. Emergency situations are one of the most difficult lessons for parents to practice with their students and should be practiced in a parking lot or low-volume residential area.

The following emergency situations should be discussed at length along with the actions required to alleviate the situation should it happen: engine failure, headlight failure, brake failure, stuck accelerator, off-road recovery, head-on collision threat, loss of forward vision (hood pops up), threshold braking, and fire under the hood.

BTW Lesson 7 Checklist

Engine Failure

Shift to Neutral _____

Restart Engine _____

Shift to Drive _____

Visual Check _____

Accelerate to Clear Intersection _____

If Engine Fails to Start, Steer to Safe Area _____

Stop and Secure Car _____

Headlight Failure

Press Dimmer Switch _____

Turn Indicator _____

Hazard Light _____

Check Traffic _____

Reduce Speed and Use Markings to Guide _____

Move Off Road _____

Secure Vehicle _____

Brake Failure

Pump Brake _____

Shift to Lower Gear _____

Use Parking Brake Without Locking _____

Look for Way Out _____

Secure Vehicle _____

Stuck Accelerator
Visually Check Areas 6
(rear) _____
and 1 (front) _____
Turn Off Ignition _____
Shift to Neutral _____
Visually Targets _____
Reduce Speed _____
Move to Safe Area _____
Secure Vehicle _____

Off-Road Recovery
Steering Control _____
Reduce Speed _____
Slight Brake _____
Straddle Road _____
Select Return _____
Traffic Check
Area 4 (left rear) _____
Signal _____

Sharp Steer Left _____
Countersteer Right _____
Cancel Signal _____
Adjust Speed _____

Head-On Collision Threat
Find Escape Route _____
3-9 Hand Position (gripping
firmly)
Steer and Countersteer _____
Reduce Speed _____

Loss of Forward Vision
Look Out Window _____
Look Under Hood _____
Check Traffic Behind _____
Move Off Road _____
Secure Vehicle _____
Emergency Flashers _____

Threshold Brake
Check Areas 6 (rear)
and 1 (front) _____
Brake Pressure
to Near Lockup _____
Heel on Floor _____
Modulate Pressure
With Toes _____
Repeat as Needed _____
Steer to Open Lane _____

NOTES

BTW Lesson 7

THIS IS AN OPTIONAL LESSON

Parent/Guardian May Choose Not to Practice

Title: Emergency Procedures

Prerequisites:

1. **Complete BTW Lesson 8.**
2. Classroom:
Module 7, vehicle maintenance, avoiding and minimizing impact, and vehicle malfunctioning
3. Simulation:
“Crash Avoidance II Program” and “Handling Emergencies and Crash Avoidance” 16 mm film.

Skills to be Understood:

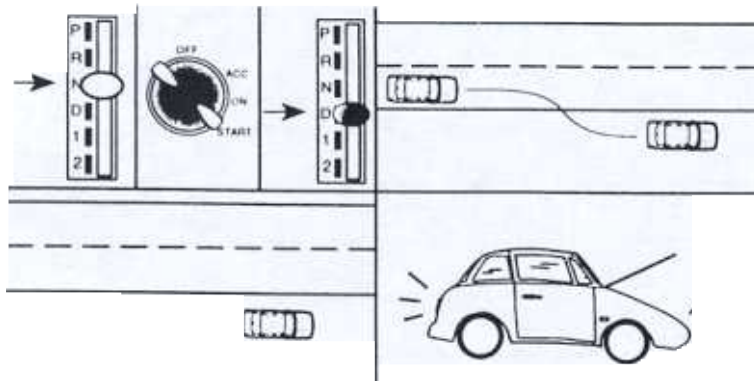
- Engine failure.
- Headlight failure.
- Brake failure.
- Stuck accelerator.
- Off-road recovery.
- Tire blow out/flat.
- Threshold braking.
- Activation of ABS.

The procedures in this lesson are of a complex nature. To practice these lessons may put the driver, parent, and other vehicle users in a high-risk situation. If you feel that you must practice these, please use an empty parking lot clear of vehicle and pedestrian traffic.

BTW 7 Helpful Hints

1. Choose a practice area that will be out of the way of other vehicles.
2. Go over the procedures before attempting them in the car.
3. Adult passenger should be ready at any time to assist if needed.
4. You may use the checklist as a guide to evaluate performance.
5. Be sure to emphasize positive performances to build confidence.
6. Provide opportunities for the student to practice multiple times to habituate skill.
7. If necessary, the diagrams and procedures could be referenced as clarification. Use them only when the car is stopped in a parked position.
8. Encourage commentary driving throughout the drive.

Engine Failure



1. SHIFT TO NEUTRAL (AVOID BRAKING).
2. RESTART ENGINE.
3. SHIFT TO DRIVE.
4. MAKE VISUAL CHECKS.
5. ACCELERATE TO CLEAR INTERSECTION.
6. IF ENGINE WILL NOT START, STEER TO SAFE AREA.
7. STOP AND SECURE CAR, THEN TURN ON FLASHERS.

Engine Failure

Objective

When directed and with minimal assistance, the student will perform proper procedures for assimilated engine failure at least twice.

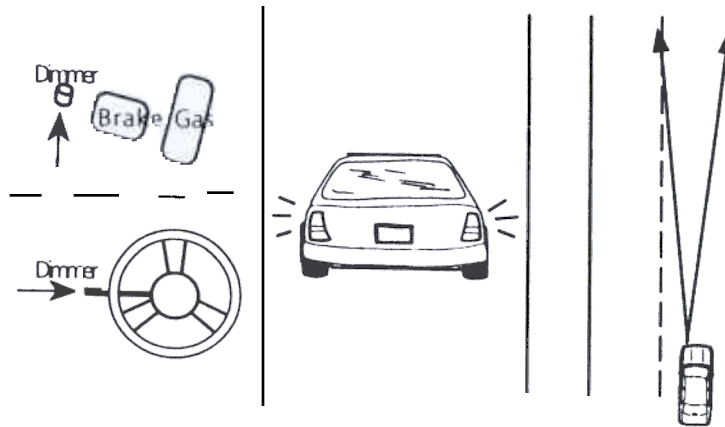
Driving Environment

- Off-street parking lot.
- Low-volume residential area.
- Conditions of good visibility.

Common Errors

- Looking down while shifting and restarting.
- Attempting to restart without shifting to neutral.
- Improper hand position while shifting.
- Braking/slowing prematurely.
- Not maintaining steering control.

Headlight Failure



1. PRESS DIMMER SWITCH FOR DOUBLE CHECK.
2. TURN ON TURN INDICATORS OR HAZARD LIGHTS.
3. RECHECK TRAFFIC AND REDUCE SPEED.
4. USE CENTER OR SIDE-LANE MARKINGS TO STEER OFF ROADWAY TO A STOP.

Headlight Failure

Objective

When directed and with minimal assistance, the student will perform proper procedures for a headlight failure at least twice.

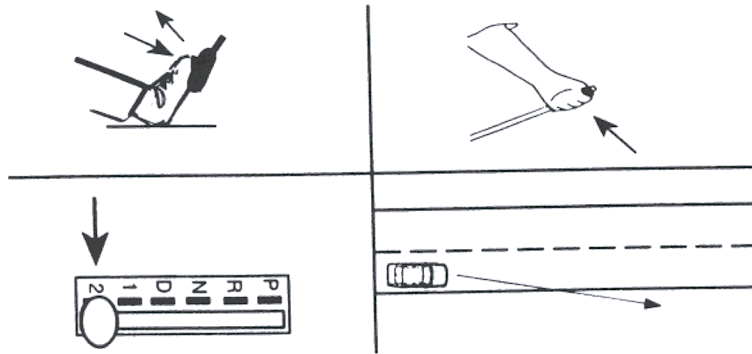
Driving Environment

- Off-street parking lot.
- Low-volume residential area.
- Night time with conditions of poor visibility.

Common Errors

- Fails to press dimmer switch.
- Takes eyes off path of travel longer than 1 second.
- Forgets to turn on hazard lights or directional signals.
- Unable to operate dimmer switch, hazard light switch, etc., without looking at them.

Brake Failure



1. PUMP BRAKE PEDAL RAPIDLY.
2. SHIFT TO LOWEST GEAR POSSIBLE
(according to speed).
3. APPLY PARKING BRAKE WITHOUT LOCKING.
4. LOOK FOR A SAFE PLACE TO GO.
5. MOVE TO SAFE AREA, STOP AND SECURE CAR.

Brake Failure

Objective

When directed and with minimal assistance, the student will perform procedures for a simulated brake failure at least twice.

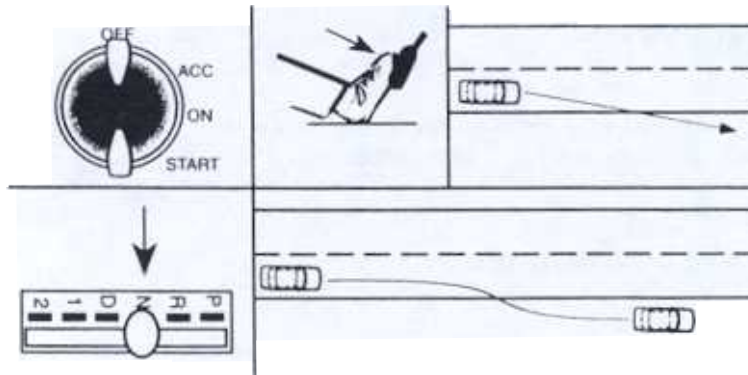
Driving Environment

- Off-street parking lot.
- Low-volume residential area.

Common Errors

- Takes eyes off path of travel longer than 1 second.
- Applies brake too fast/hard, locks brake.
- Forgets to shift to a lower gear.
- Fails to apply brake release while activating E-brake.

Stuck Accelerator



1. CHECK FRONT AND REAR AREAS (1 THROUGH 6).
2. TURN OFF IGNITION AND SHIFT TO NEUTRAL.
3. VISUALLY TARGET OPEN AREA FOR ESCAPE.
4. REDUCE SPEED.
5. MOVE TO SAFE AREA, STOP AND SECURE VEHICLE.

Stuck Accelerator

Objective

When directed and with minimal assistance, the student will perform proper procedures for a simulated stuck accelerator at least twice.

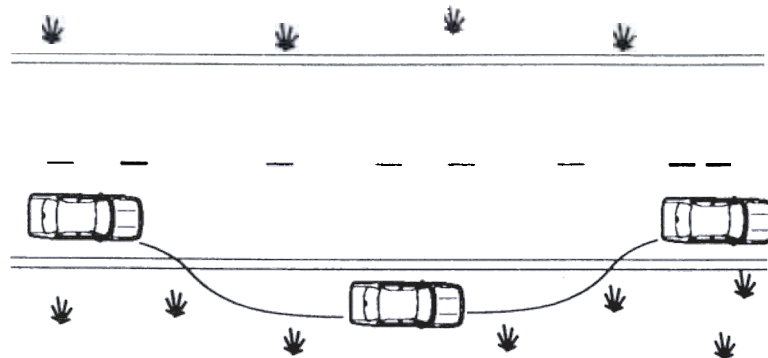
Driving Environment

- Off-street parking lot.
- Low-volume residential area.

Common Errors

- Wrong hand position while shifting to neutral.
- Takes eyes off path of travel longer than 1 second.
- Fails to dislodge accelerator pedal.
- Tries to restart engine instead of turning off.
- Fails to check traffic behind.

Off-Road Recovery



1. HOLD STEERING WHEEL FIRMLY AND STEER STRAIGHT.
2. LET UP ON ACCELERATOR AND BRAKE GENTLY TO 5-10 MPH.
3. POSITION VEHICLE SO IT STRADDLES PAVEMENT EDGE.
4. SELECT LEVEL SPOT FOR RETURN.
5. CHECK LEFT REAR AREA (4).
6. SIGNAL AND STEER SHARPLY TO LEFT.
7. COUNTERSTEER WHEN RIGHT FRONT TIRE TOUCHES PAVEMENT.
8. CANCEL SIGNAL AND MOVE AHEAD.

Off-Road Recovery

Objective

When directed and with minimal assistance, the student will perform proper procedures for off-road recovery at least twice.

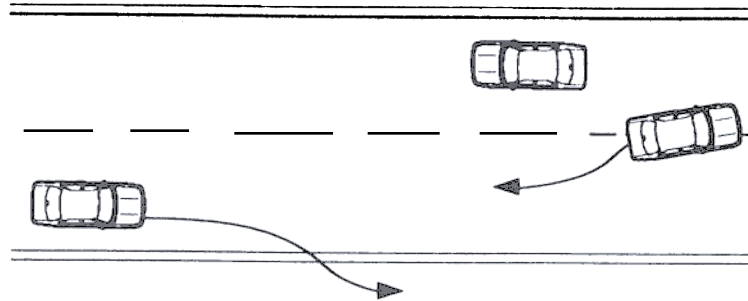
Driving Environment

- Off-street parking lot with drop off shoulder area.
- Adequate space for recovery without reducing speeds below 25 mph.

Common Errors

- First reaction is to steer sharp or brake hard.
- Not firm control of steering wheel.
- Braking too hard on loose gravel.
- Not steering sharp left for reentry.
- Late in counter steering.
- Forgets to check traffic prior to reentry.
- Fails to make blind spot check.

Head-On Collision Threat



1. VISUALLY TARGET OPEN AREA AND FIND ESCAPE.
2. GRIP STEERING WHEEL FIRMLY.
3. USING 3-9 OR 4-8, STEER CAR TO OPEN AREA.
4. COUNTERSTEER AND THEN MOVE WHEEL TO *CENTER STEER*.
5. REDUCE SPEED USING CONTROLLED BRAKING.

Head-On Collision Threat

Objective

When directed and without assistance, the student will perform at least three times proper procedures for avoiding a simulated head-on collision threat.

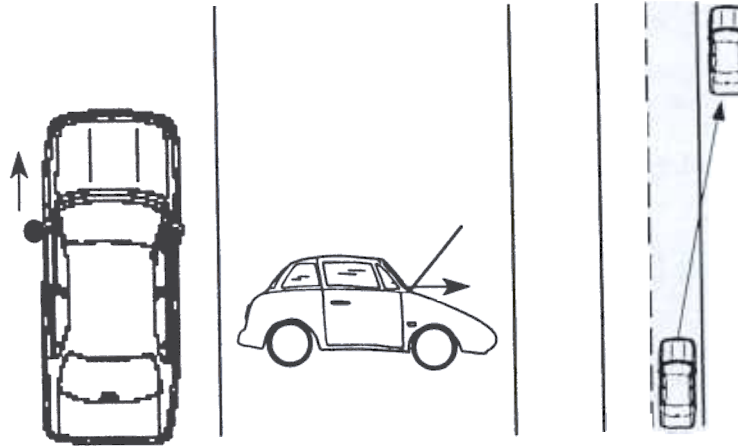
Driving Environment

- Off-street parking area or driving range at least 200' x 200'.

Common Errors

- Selects wrong escape path.
- Uses hand-over-hand instead of 3-9 or 4-8 steering.
- Loses grip on steering wheel.
- Takes eyes off path of travel.
- Locks wheels.

Loss of Forward Vision



1. ROLL DOWN WINDOW LOOKING OUT AND/OR AROUND HOOD.
2. LEAN DOWN LOOKING BETWEEN DASH AND HOOD.
3. VISUALLY TARGET FOR OPEN AREA.
4. CHECK REAR AND RIGHT REAR AREAS (5 and 6), SIGNAL, AND STEER OFF ROADWAY TO OPEN AREA.
5. STOP AND SECURE CAR.

Loss of Forward Vision

Objective

When directed and with minimal assistance, the student will perform proper procedures for a simulated loss of forward vision situation at least twice.

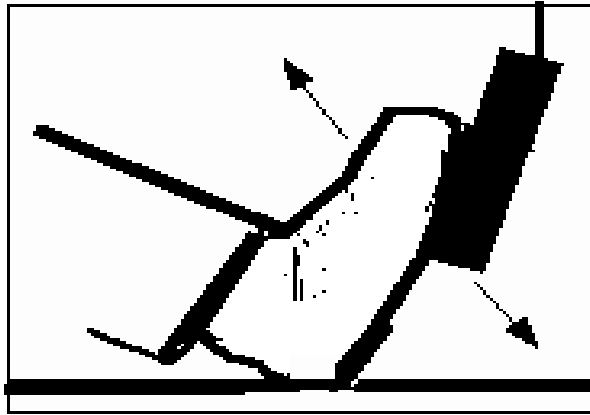
Driving Environment

- Off-street parking lot.
- Low-volume residential area.
- Good visibility.

Common Errors

- Loss of steering control while looking between the dash and hood.
- Not anticipating the need for windshield wipers.
- Forgetting to roll down window before attempting to look.

Threshold Brake



1. CHECK FRONT AND REAR AREAS (1 and 6).
2. WITH HEEL ON FLOOR, APPLY PRESSURE TO NEAR LOCKUP USING TOES.
3. MODULATE PRESSURE WITH TOES UP AND DOWN 1-2 PERCENT AS NEEDED.
4. REPEAT BRAKING AND TOE MODULATION AS NEEDED.
5. STEER TO OPEN AREAS AS NEEDED.

Threshold Brake

Objective

When directed, the student will bring the car to a quick stop at least twice while maintaining control using the threshold braking technique.

Driving Environment

- Residential area.
- Very little traffic.
- Good visibility in the front and rear.

Common Errors

- Not checking rear area.
- Locking brakes.
- Releasing brake pressure when moderately lifting heel off floor.

